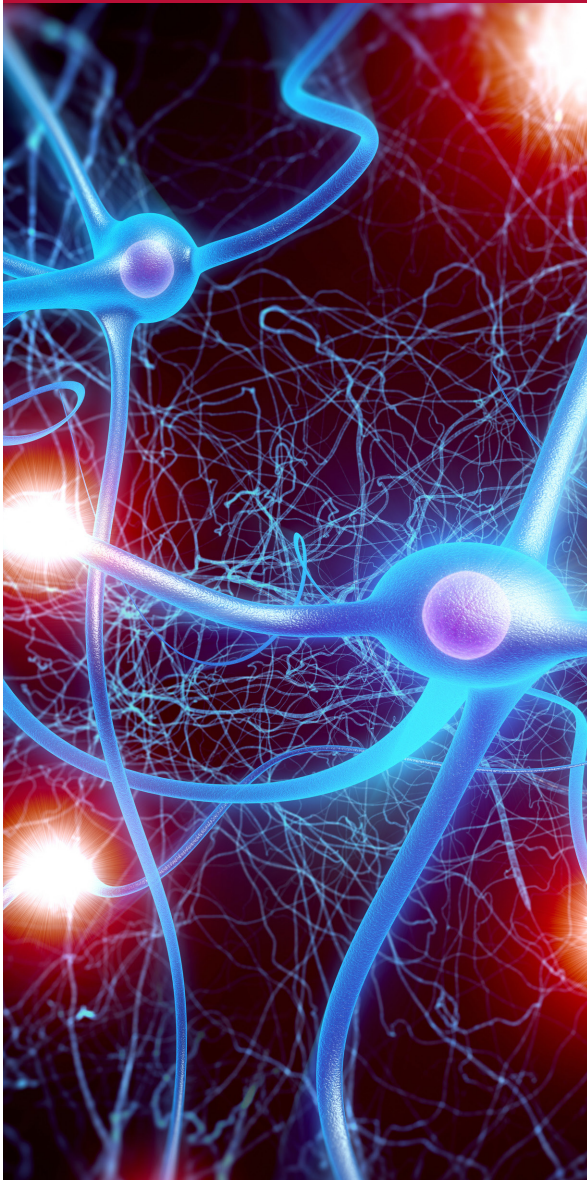


2ND ANNUAL

# Alzheimer's Disease Symposium

EARN 3 CME  
CREDITS/  
3 CEUs



Presented by  
Stony Brook Center of Excellence for Alzheimer's Disease  
"Recognizing and Assessing Cognitive Impairment"

DATE **Friday, November 15, 2019**

TIME **8 to 11 am**

LOCATION **Stony Brook Medicine  
Health Sciences  
Level 2, Lecture Hall 4  
101 Nicolls Road, Stony Brook, NY**

Presenters will include experts from  
Stony Brook Medicine, NYU Winthrop Hospital  
and an elder law attorney.

#### EDUCATIONAL OBJECTIVES

- Demonstrate effective and efficient methods of recognizing cognitive decline in patients during an office evaluation.
- Describe why recognizing dementia and cognitive decline is important for patient care and planning.
- Describe cognitive assessment scales for early detection of cognitive impairment in primary care settings.
- Recognize the utility of the neuropsychological evaluation to further clarify the nature of cognitive deficits.
- Summarize relevant literature about cognitive screening and the role of rehabilitation professionals.
- Self assess practitioner's (own) comfort level with appropriate cognitive screening and assessment tools that rehabilitation professionals may employ.
- Relate legal concerns for people with cognitive impairment and their caregivers when they have not planned in advance for care.

**CONTINUING MEDICAL EDUCATION CREDITS** The School of Medicine, State University of New York at Stony Brook, is accredited by the Accreditation Council for Continuing Medical Education to provide continuing medical education for physicians.

The School of Medicine, State University of New York at Stony Brook, designates this live activity for a maximum of **3.00 AMA PRA Category 1 Credit(s)**<sup>™</sup>. Physicians should only claim the credit commensurate with the extent of their participation in the activity.

**CONTINUING EDUCATION UNITS** SUNY Stony Brook's School of Social Welfare is recognized by the New York State of Education Department's State Board for Social Work as an approved provider of continuing education for licensed social workers (#0050). This program is approved for 3 continuing education contact hours for NYS licensed social workers.

**CONTINUING EDUCATION UNITS** SUNY Stony Brook's School of Nursing is an approved provider of continuing nursing education by the PA state Nurses Association, an accredited approver by the American Nurses Credentialing Center's Commission on Accreditation. This program is approved for 3 continuing education contact hours for anyone who is affiliated with the field of nursing.

The Stony Brook Center of Excellence for Alzheimer's Disease program is supported in part by a grant from the New York State Department of Health.

Stony Brook University/SUNY is an affirmative action, equal opportunity educator and employer. For more information or if you need a disability-related accommodation, call (631) 444-4000. 19080167H

**REGISTER  
TODAY**

**For CMEs**  
**MDs, PAs and NPs:** [bit.ly/alzheimers19](http://bit.ly/alzheimers19)

**For CEUs**  
**Nursing Affiliated:** [bit.ly/nurse\\_alzheimers19](http://bit.ly/nurse_alzheimers19)  
**Social Workers:** [bit.ly/sw\\_alzheimers19](http://bit.ly/sw_alzheimers19)

**QUESTIONS?**

Daphne.Perry@stonybrookmedicine.edu  
(631) 632-3074 • #SBMedConf



**Stony Brook**  
**Neurosciences Institute**